

EDUCATION & TRAINING PAY

2014 - 2024 - Current Annual Wages

Which path will you take?

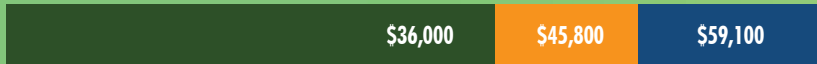
DOCTORAL OR PROFESSIONAL DEGREE



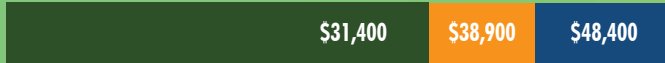
MASTER'S DEGREE



BACHELOR'S DEGREE



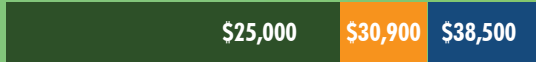
ASSOCIATE DEGREE



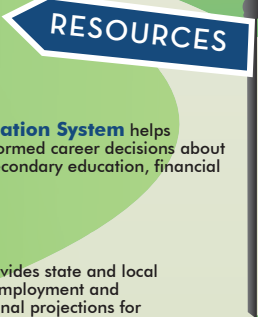
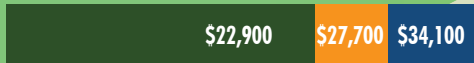
POSTSECONDARY NON-DEGREE AWARD



HIGH SCHOOL DIPLOMA OR EQUIVALENT



LESS THAN HIGH SCHOOL



Idaho's Career Information System helps people of all ages make informed career decisions about occupations, careers, postsecondary education, financial aid and finding jobs.

idahocis.org



Idaho's Labor Market Information provides state and local data and research on occupations, wages, unemployment and employment levels, and industry and occupational projections for job seekers, employers, policy makers and a variety of other customers and stakeholders.

lmi.idaho.gov



JobScope is an online career search tool to help you make informed career and educational decisions. No login or registration required.

labor.idaho.gov/jobscope

In Idaho

25% of workers with this education make this amount or less annually; 75% make more.

Half of workers with this education make more and half make less annually.

25% of workers with this education make this amount or more annually; 75% make less.

IDAHO TOP 10 HOT JOBS

Most Abundant, Fastest-Growing, Highest-Paying
2014-2024

1. Software Developers and Computer Systems, Other
2. Lawyers
3. Management Analysts
4. Accountants and Auditors
5. Civil Engineers
6. Personal Financial Advisors
7. Business Operations Specialists, All Other
8. Physical Therapists
9. Health Specialties Teachers, Postsecondary
10. Market Research Analysts and Marketing Specialists

Find out more about occupations and wages in Idaho at lmi.idaho.gov.

The Idaho Department of Labor is an equal opportunity employer and service provider. Reasonable accommodations are available upon request. Dial 711 for Idaho Relay Service. This publication is produced by the Idaho Department of Labor which is funded at least in part by federal grants from the U.S. Department of Labor. Costs associated with this publication are available by contacting the Idaho Department of Labor.

This workforce product was funded by a grant awarded by the U.S. Department of Labor's Employment and Training Administration. The product was created by the grantee and does not necessarily reflect the official position of the U.S. Department of Labor. The Department of Labor makes no guarantees, warranties or assurances of any kind, express or implied, with respect to such information, including any information on linked sites and including, but not limited to, accuracy of the information or its completeness, timeliness, usefulness, adequacy, continued availability or ownership. This product is copyrighted by the institution that created it. Internal use by an organization and/or personal use by an individual for non-commercial purposes is permissible. All other uses require the prior authorization of the copyright owner.