



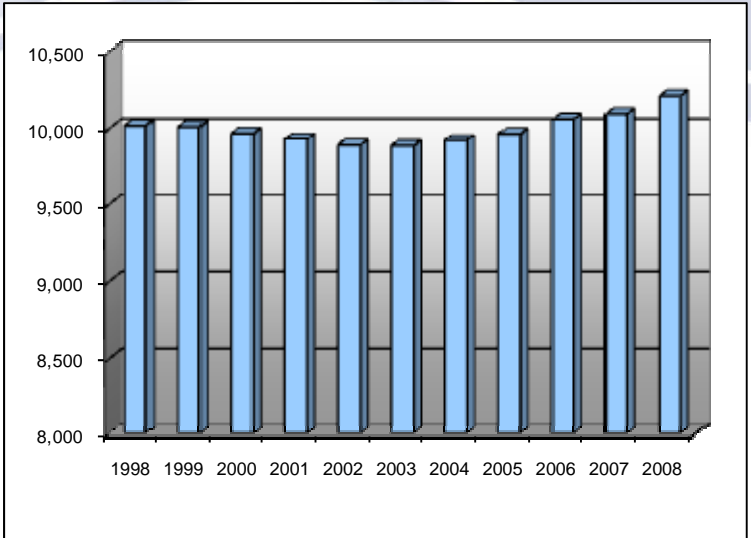
Washington County

November 2009

Work Force Trends

Population

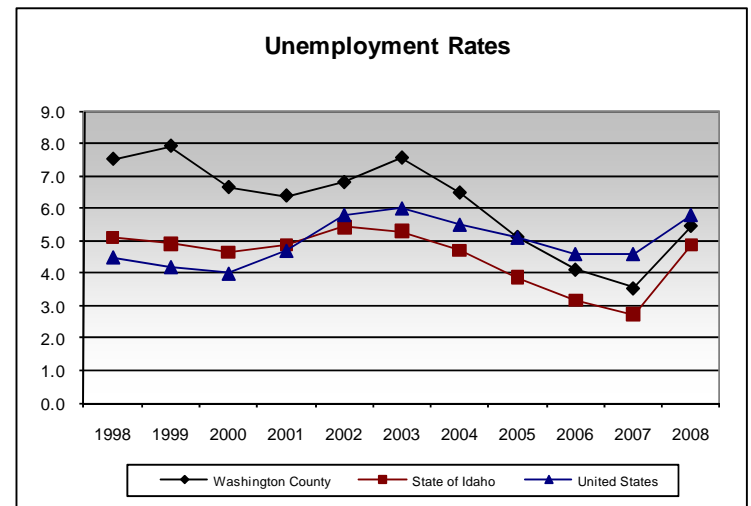
Washington County ranks 27th in population and 20th in area among Idaho's 44 counties. Washington County's population began a slight decline in 1999 as some residents left seeking jobs in locations with more diversified economies. After the economic slowdown of 2002-2003, the population began growing again, albeit slowly, and land speculators started looking toward Washington County. The population grew by 260 from 9,887 in 1997 to 10,147 in 2007 before growth slowed to 188 from 10,018 in 1998 to 10,206 in 2008. Population growth is slowing in the current economic downturn that has limited opportunities. But Washington County has never seen the robust growth that nearby Canyon County has seen, a reflection of a rural, highly agricultural county.



Labor Force & Employment

Washington County's civilian labor force grew by 134, or 2.9 percent, from 1998 to 2008, roughly a percentage point higher than population growth as younger workers moved in to take the jobs being relinquished by older workers in the county's aging population. Some people, often moving with their families from Other states to rural areas such as Washington County, also bring their careers with them and work from home. Technology and Washington County's proximity to the Boise Airport allow people to bypass densely populated areas and still make their livings. They can move to more relaxed locations to raise their families. The unemployment rate has dropped significantly over the past decade from a high of 7.9 percent in 1999 to a low of 3.5 percent in 2007, a level commonly considered full employment.

As in most southwestern Idaho counties, nonfarm payroll job growth declined during 2008's national recession with the fourth quarter especially difficult. Similar to the region's metropolitan area, construction significantly declined in the second half of the

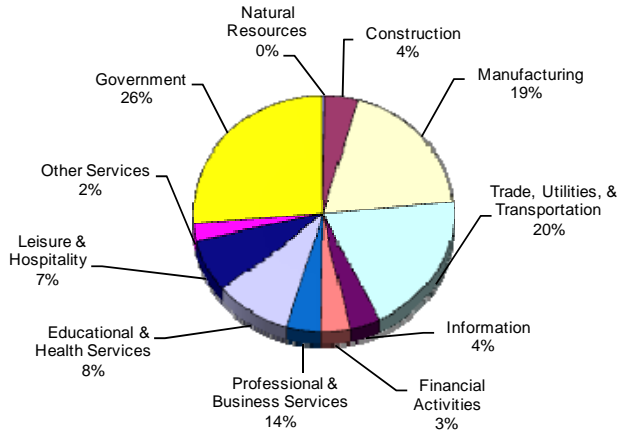


year from its peak of the last several years. High fuel prices curtailed travel to the area, and leisure and hospitality jobs declined by over 20 percent. Manufacturing, however, was a bright spot. An 8.4 percent job increase was mostly due to the large presence of food manufacturers in the county and job losses in other industries, which made it easier for these employers to recruit and retain workers.

Labor Force	Oct 2008	Oct 2009
Civilian Labor Force	4,712	4,761
Total Employment	4,430	4,306
Unemployed	282	455
% of Labor Force Unemployed	6.0	9.6
State of Idaho % Unemployed	5.6	8.9
U.S. % Unemployed	6.6	10.2

Labor Force	1998	1999	2000	2001	2002	2003	2004	2005	2006	2007	2008
Civilian Labor Force	4,658	4,626	5,168	5,076	5,105	4,722	5,016	5,031	4,906	5,028	4,792
Unemployment	350	367	343	324	347	356	325	257	202	178	261
% of Labor Force Unemployed	7.5	7.9	6.6	6.4	6.8	7.5	6.5	5.1	4.1	3.5	5.4
Employment	4,308	4,259	4,825	4,753	4,758	4,366	4,692	4,774	4,705	4,850	4,531

Nonfarm Payroll Jobs for 2008



Major Employers

Appleton Produce
City of Weiser
Champion Home Builders
Hometown Ford
Cambridge School District
Weiser Memorial Hospital
Ridley's
Washington County
Midvale School District
Weiser School District

Occupational Wages*

Starting Wage

Bank Teller	\$7.85
Bookkeeper	\$8.58
Retail Salesperson	\$6.26
Nursing Aides	\$7.53
Truck Driver	\$11.49
Farm Equipment Operators	\$7.85
Agricultural Workers	\$7.10
Shipping & Receiving Clerks	\$11.12
Construction Laborer	\$9.31
Carpenter	\$15.53

*Additional occupational wage data can be found on the Idaho Department of Labor Web site at lmi.idaho.gov.

Per Capita Income & Employment

After reaching 18th among the 44 counties in per capita income in 2000, Washington County slipped to 31st in 2007 with per capita income of \$25,624. This underscores the difficulty rural areas experience in keeping pace with income gains made during periods of strong economic growth in urban communities, where higher-paying jobs are typically concentrated.

Government and manufacturing accounted for 41.2 percent of covered employment during 2008, up from 39.3 percent in 2007 as a resurgent food manufacturing sector was able to hire workers for jobs that have previously been hard to fill. With downturns in construction and other industries taking their toll, the number of workers seeking employment in food manufacturing is rising.

Covered Employment & Average Annual Wages Per Job for 1998, 2007 & 2008	1998		2007		2008	
	Average Employment	Average Wages	Average Employment	Average Wages	Average Employment	Average Wages
Total Covered Wages	3,130	\$18,288	3,011	\$24,911	2,990	\$25,554
Agriculture	421	\$11,749	265	\$18,781	295	\$17,696
Mining	0	\$0	*	*	*	*
Construction	163	\$19,003	150	\$25,558	112	\$24,203
Manufacturing	585	\$24,333	488	\$29,118	529	\$27,613
Trade, Utilities & Transportation	538	\$16,182	524	\$25,127	526	\$26,116
Information	83	\$25,547	105	\$32,515	107	\$34,018
Financial Activities	99	\$23,515	92	\$34,295	81	\$34,196
Professional and Business Services	96	\$18,261	123	\$26,630	121	\$28,922
Educational and Health Services	208	\$16,414	258	\$23,345	265	\$24,326
Leisure and Hospitality	198	\$7,327	261	\$8,756	206	\$9,760
Other Services	51	\$17,008	45	\$26,252	42	\$26,810
Government	689	\$20,818	697	\$27,858	704	\$29,271

Per Capita Income	1998	1999	2000	2001	2002	2003	2004	2005	2006	2007
Washington County	\$17,998	\$18,377	\$18,412	\$19,387	\$19,636	\$20,314	\$21,402	\$22,860	\$23,922	\$25,624
State of Idaho	\$21,789	\$22,786	\$24,077	\$25,024	\$25,234	\$25,543	\$27,389	\$28,681	\$30,374	\$31,804
United States	\$26,883	\$27,939	\$29,843	\$30,574	\$30,838	\$31,530	\$33,157	\$34,690	\$36,794	\$38,615

Information provided by Bureau of Economic Analysis



This county is served by the office listed below:
 Idaho Department of Labor
 501 N. 16th St., Suite 107
 Payette, ID 83661-0179 Ph: (208) 642-9361

labor.idaho.gov