



Oneida County

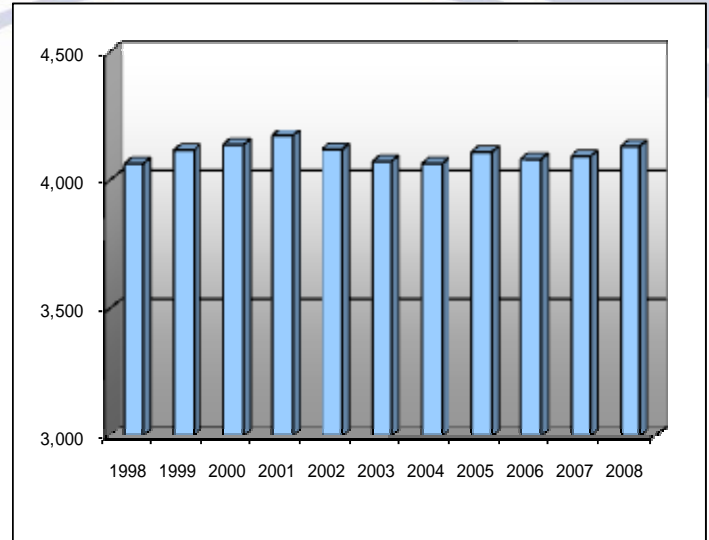
November 2009

Work Force Trends

Population

Oneida County sits on the Idaho/Utah border, nestled in the northern end of the Great Basin against the stately peaks of the Rocky Mountains. A leisurely lifestyle and spectacular scenery combine with affordable land and housing, to encourage residents to stay if they can find suitable work. The population has been relatively flat during the last 10 years, rising from 4,064 in 1998 to just 4,130 in 2008.

The county boasts wide open spaces, scenic canyons with interesting rock formations, springs, streams and reservoirs for year-round recreational activities. Many people who work along Utah's Wasatch Front, have chosen to live in Oneida County because of its surroundings and relaxed lifestyle.

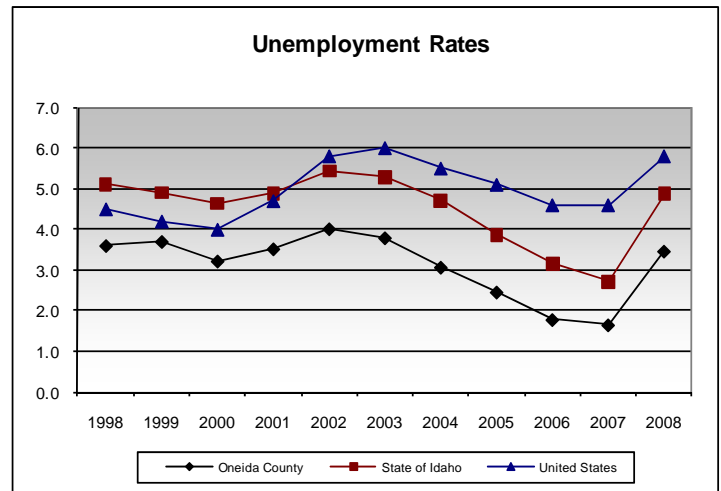


Labor Force & Employment

Oneida County's diverse and skilled labor force has increased nearly 27 percent over the last 10 years. With employment rising faster than the labor force, the county has maintained one of the lowest unemployment rates in Idaho and the nation since 1998.

The county's location on the Utah border provides additional employment opportunities across the state line. Businesses in Malad City, the county seat, can take advantage of trade with Utah residents, who drive to Idaho for state lottery tickets.

Nonfarm jobs were up 227, or 27.3 percent, between 1998 and 2008. The industry mix has changed slightly with an influx of professional, business, education and health services. Mining had a significant job loss in the

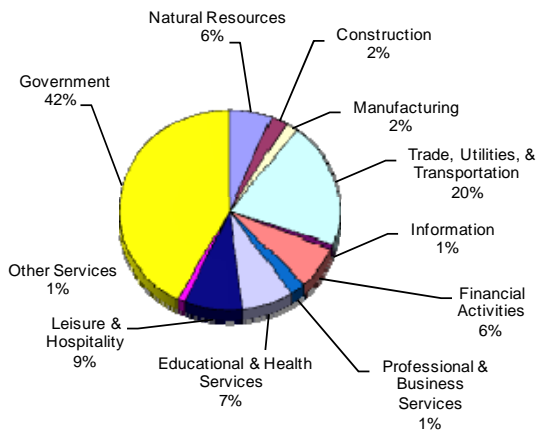


last 10 years while trade, utilities and transportation posted a significant increase.

Labor Force	Oct 2008	Oct 2009
Civilian Labor Force	2,311	2,353
Total Employment	2,217	2,203
Unemployed	94	151
% of Labor Force Unemployed	4.1	6.4
State of Idaho % Unemployed	5.6	8.9
U.S. % Unemployed	6.6	10.2

Labor Force	1998	1999	2000	2001	2002	2003	2004	2005	2006	2007	2008
Civilian Labor Force	1,757	1,736	2,010	2,003	1,945	1,960	1,972	2,130	2,216	2,290	2,229
Unemployment	64	65	65	71	78	74	61	52	39	38	77
% of Labor Force Unemployed	3.6	3.7	3.2	3.5	4.0	3.8	3.1	2.5	1.8	1.6	3.5
Employment	1,693	1,671	1,945	1,933	1,867	1,886	1,912	2,078	2,176	2,252	2,152

Nonfarm Payroll Jobs for 2008



Wages & Income

Trade and transportation provide 19.6 percent of all jobs in Oneida County. Government accounts for 43 percent, mostly in public education.

Wages and covered employment in Oneida County are among the lowest in the state. The loss of higher paying mining jobs that gave way to a majority of lower-paying jobs in the trade and service sectors, combine to hold the average wage down.

Oneida County's per capita personal income at \$19,056 is just 70.1 percent of state per capita income and 57.7 percent of the national figure.

Major Employers

Allen Drug
Hess Pumice Products, Inc.
Idaho Milling and Grain
Ireland Bank
Malad Living Center
Malad Valley Clinic
Moss Trucking
Oneida County Hospital and Nursing Home
Pay America --Temporary Help

Occupational Wages*

Starting Wages

Cashiers, Retail	\$6.55
Cooks	\$6.76
Food & Beverage Servers	\$6.55
Janitors	\$6.86
Construction Laborers	\$8.10
Maids	\$6.55
Nurses, Registered	\$19.83
Office Clerks--general	\$7.35
Auto Mechanics	\$10.24
Teachers	\$31,500.00

* Additional occupational wage data can be found on the Idaho Department of Labor Web site at lmi.idaho.gov.

Covered Employment & Average Annual Wages Per Job for 1998, 2007 & 2008	1998		2007		2008	
	Average Employment	Average Wages	Average Employment	Average Wages	Average Employment	Average Wages
Total Covered Wages	831	\$16,875	1,106	\$22,717	1,052	\$23,096
Agriculture	*	*	32	\$28,042	37	\$26,392
Mining	76	\$26,032	*	*	*	*
Construction	24	\$14,105	36	\$17,387	25	\$18,818
Manufacturing	17	\$23,523	21	\$25,932	18	\$30,410
Trade, Utilities & Transportation	152	\$12,039	201	\$21,069	206	\$21,809
Information	*	*	9	\$12,429	9	\$11,571
Financial Activities	45	\$21,682	63	\$33,826	70	\$37,007
Professional and Business Services	13	\$14,179	50	\$33,328	24	\$38,806
Educational and Health Services	44	\$13,887	81	\$16,652	77	\$15,794
Leisure and Hospitality	47	\$4,741	73	\$7,994	90	\$7,799
Other Services	3	\$13,445	12	\$11,126	11	\$11,663
Government	391	\$18,000	428	\$21,735	421	\$22,506

Per Capita Income	1998	1999	2000	2001	2002	2003	2004	2005	2006	2007
Oneida County	\$16,132	\$16,246	\$16,497	\$17,279	\$16,486	\$17,461	\$18,314	\$19,051	\$19,664	\$22,299
State of Idaho	\$21,789	\$22,786	\$24,077	\$25,024	\$25,234	\$25,543	\$27,389	\$28,681	\$30,374	\$31,804
United States	\$26,883	\$27,939	\$29,843	\$30,574	\$30,838	\$31,530	\$33,157	\$34,690	\$36,794	\$38,615

Information provided by U.S. Census Bureau



This county is served by the office listed below:
 Idaho Department of Labor
 430 N. 5th Ave.
 Pocatello, ID 83205-4087 Ph: (208) 236-6710

labor.idaho.gov